

Riggs

CAT



972G 3306

REPAIR OPTIONS

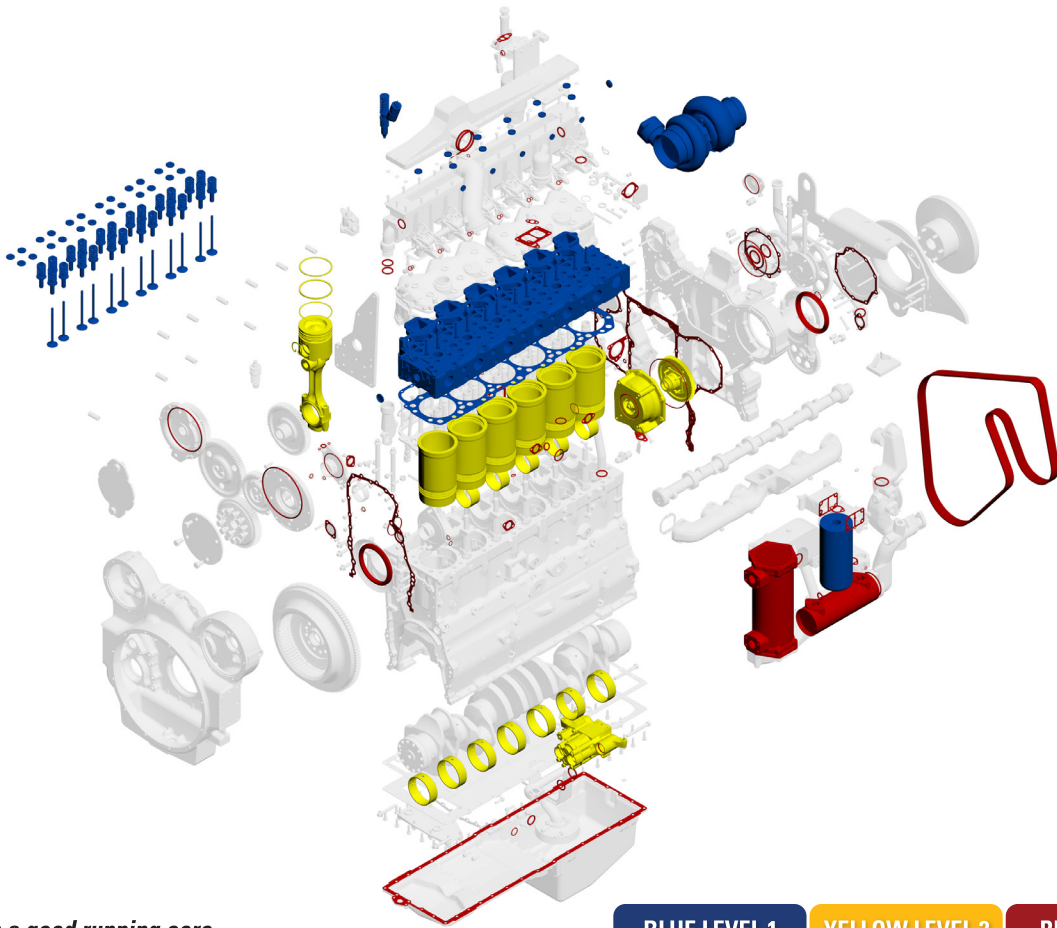
888.906.9228



riggscat.com

972G 3306 ENGINE OPTIONS

Parts in the drawings may or may not be the same in all arrangements they are only to provide a basic visual interpretation.



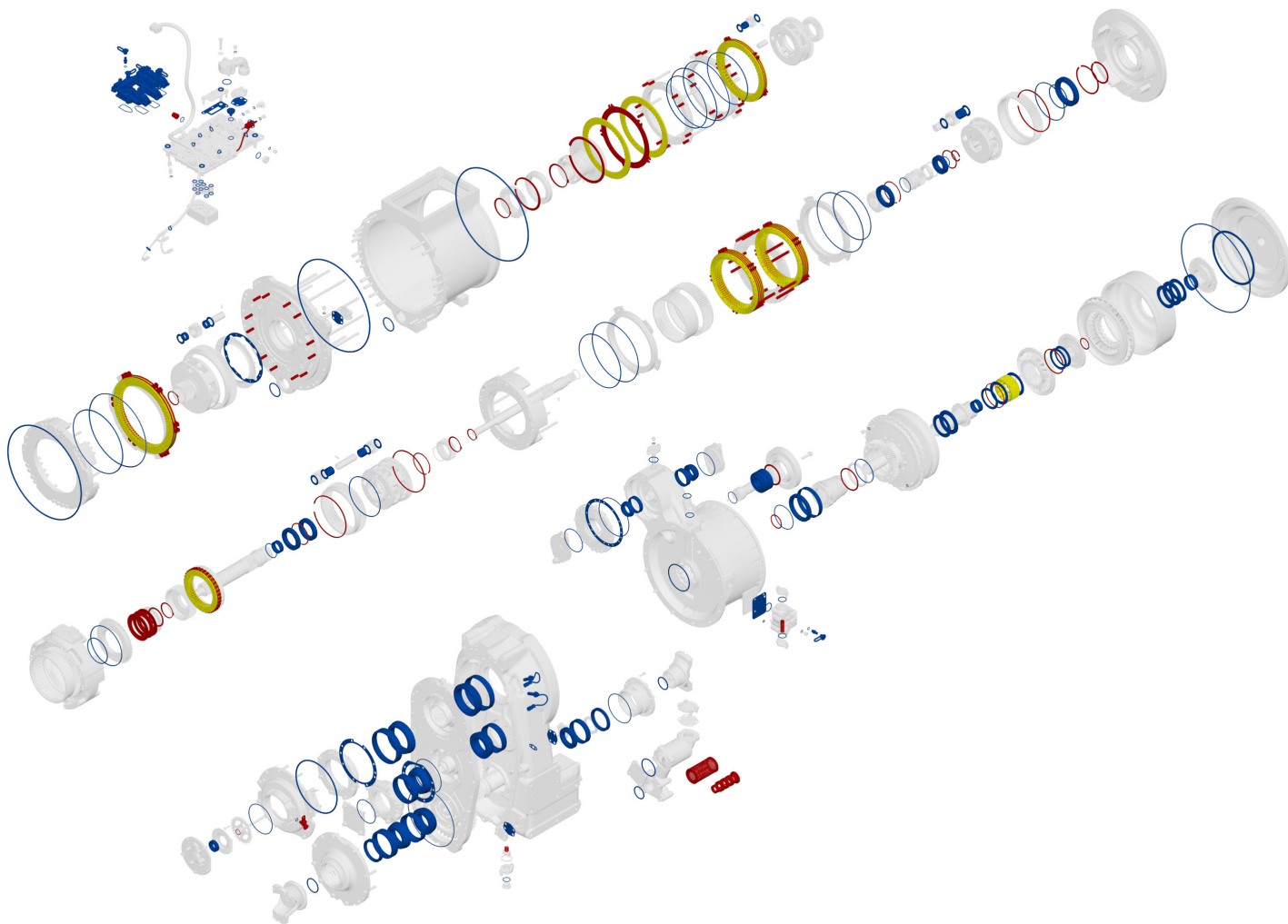
Based on a good running core

New or Reman Head/s and Gaskets	X	X	X
Turbocharger, gaskets and fasteners	X	X	X
New or Reman Fuel Injectors	X	X	X
Air, oil, and fuel filters	X	X	X
Head Bolts(C15)	X	X	X
Fuel Lines (High Pressure)	X	X	X
In Chassis Test After Repair	X	X	X
Engine Gaskets and Bearings		X	X
Cylinder Packs		X	X
Water Pump		X	X
Oil Pump		X	X
Dyno Test Engine		X	X
Engine Control Module (ECM)			X
Wiring Harness/ Eng & Injector			X
Reman or New Engine Oil Cooler			X
Check Clean Radiator & Coolers			X
Engine Mounts			X
Coolant, Air Ind, & Exhaust Hoses			X
HEUI / Fuel Injection Pump			X
TIER IV Components			X
Head Bolts (All C Models)			X
Polish Crankshaft			X
Engineering Updates			X
3 Yr 5000hr Extended Warranty			X
*Level One not an option for truck engines that have over 500k miles			

*Level One not an option for truck engines that have over 500k miles

972G 3306 TRANS. AND TORQ.

Parts in the drawings may or may not be the same in all arrangements they are only to provide a basic visual interpretation.



Based on good running cores

Parts Included

All bearings and races

All seals including control valves

Paint component

Clutch friction discs

Modulation valves

Shim packs

Side thrust plates

Thrust plate retainers

Outlet relief spring

Clutch plates

Magnetic tube

Clutch and valve springs

Suction screen

Freewheel cam

Sensors/switches

Retaining ring

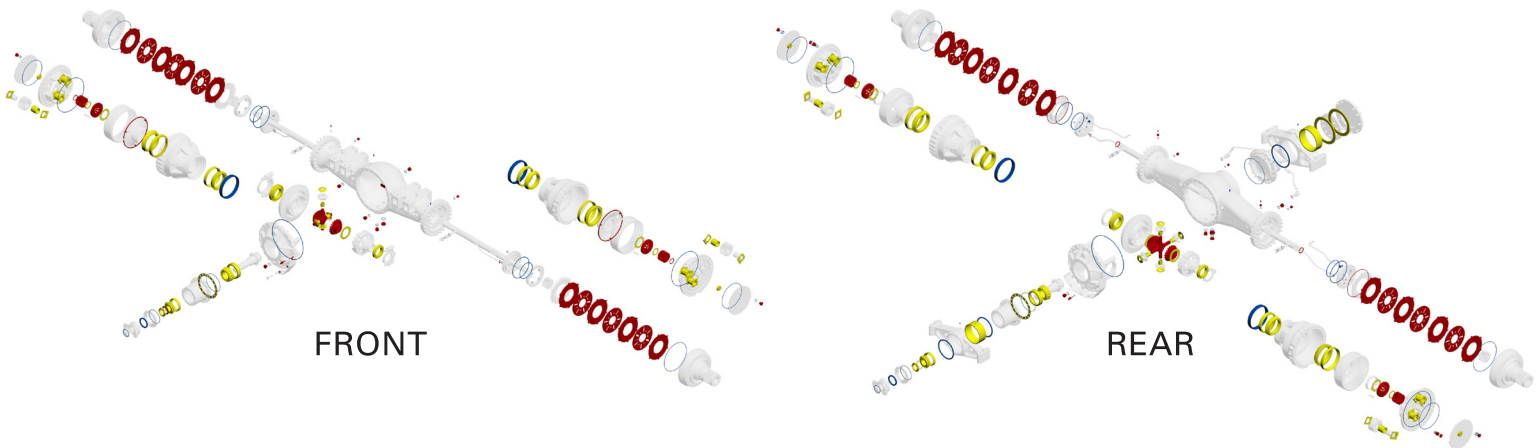
Thrust disc/plates

Test (transmission)

BLUE LEVEL 1	YELLOW LEVEL 2	RED LEVEL 3
X	X	X
X	X	X
X	X	X
	X	X
X	X	X
X	X	X
X	X	X
X	X	X
X	X	X
		X
		X
		X
		X
	X	X
X	X	X
X	X	X
X	X	X
X	X	X

972G 3306 FRONT AND REAR AXLE

Parts in the drawings may or may not be the same in all arrangements they are only to provide a basic visual interpretation.

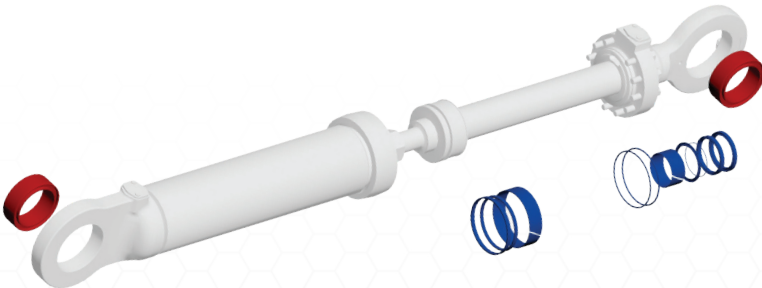


Based on good running cores

	BLUE LEVEL 1	YELLOW LEVEL 2	RED LEVEL 3
All Seals and Gaskets	X	X	X
All Bearings and Races		X	X
Shim Pack		X	X
Paint Component	X	X	X
Locknut - pinion shaft			X
Retaining Rings		X	X
Brake Disks and Plates that do not meet Caterpillar Reuse Guidelines			X
Differential Spider			X
*A WARRANTABLE LEVEL			

972G 3306 HYDRAULIC CYLINDERS

Parts in the drawings may or may not be the same in all arrangements they are only to provide a basic visual interpretation.



Based on good running cores

	BLUE LEVEL 1	RED LEVEL 2
Wash Cylinder	X	X
Disassemble	X	X
Inspect	X	X
Perform Light Hone as Necessary	X	X
Clean Out	X	X
Reassemble With New Seals	X	X
Replace Eye and or Trunnion Bearings		X
Pressure and Operational Test	X	X



972G 3306 FINANCING OPTIONS

12 MONTHS
EQUAL PAYMENTS

0%
INTEREST*

18 MONTHS
EQUAL PAYMENTS

2.9%
INTEREST*

*With approved credit. Not all buyers may qualify. \$1,000 minimum purchase required with minimum of 50% parts on invoice. Offers, pricing, and options subject to change without notice. See dealer for details.

REBUILDING THE MACHINES THAT BUILT ARKANSAS

Riggs



El Dorado

2001 West Hillsboro St.
870-881-0800

Fort Smith

6601 South Zero
479-646-4755

Harrison

5475 Hwy 65 South
870-429-8700

Jonesboro

3701 East Parker Rd.
870-932-5473

Little Rock

9125 Interstate 30
501-570-3100

Russellville

370 Lakefront Drive
479-968-3304

Springdale

4117 Wagon Wheel Rd.
479-756-8080

Texarkana

2400 Trinity Blvd.
870-773-5621

riggscat.com

