

Riggs



980G

REPAIR OPTIONS

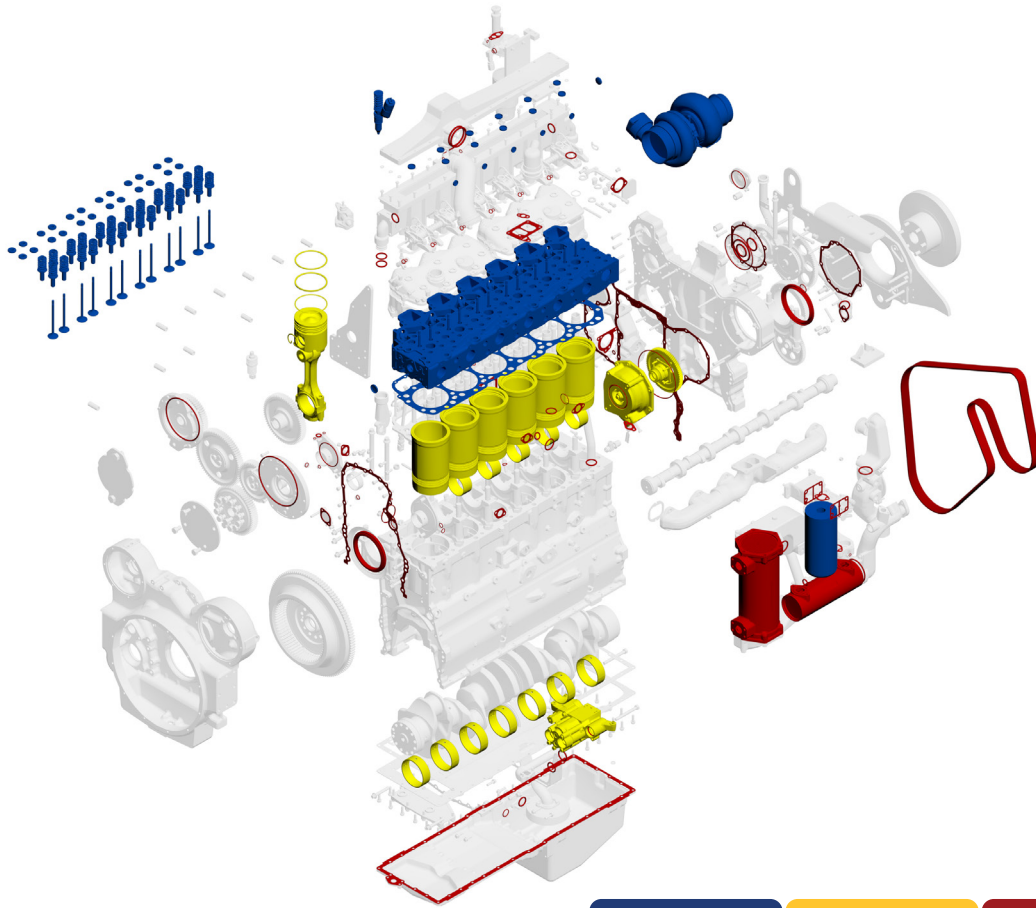
888.906.9228



riggscat.com

980G ENGINE OPTIONS

Parts in the drawings may or may not be the same in all arrangements they are only to provide a basic visual interpretation.



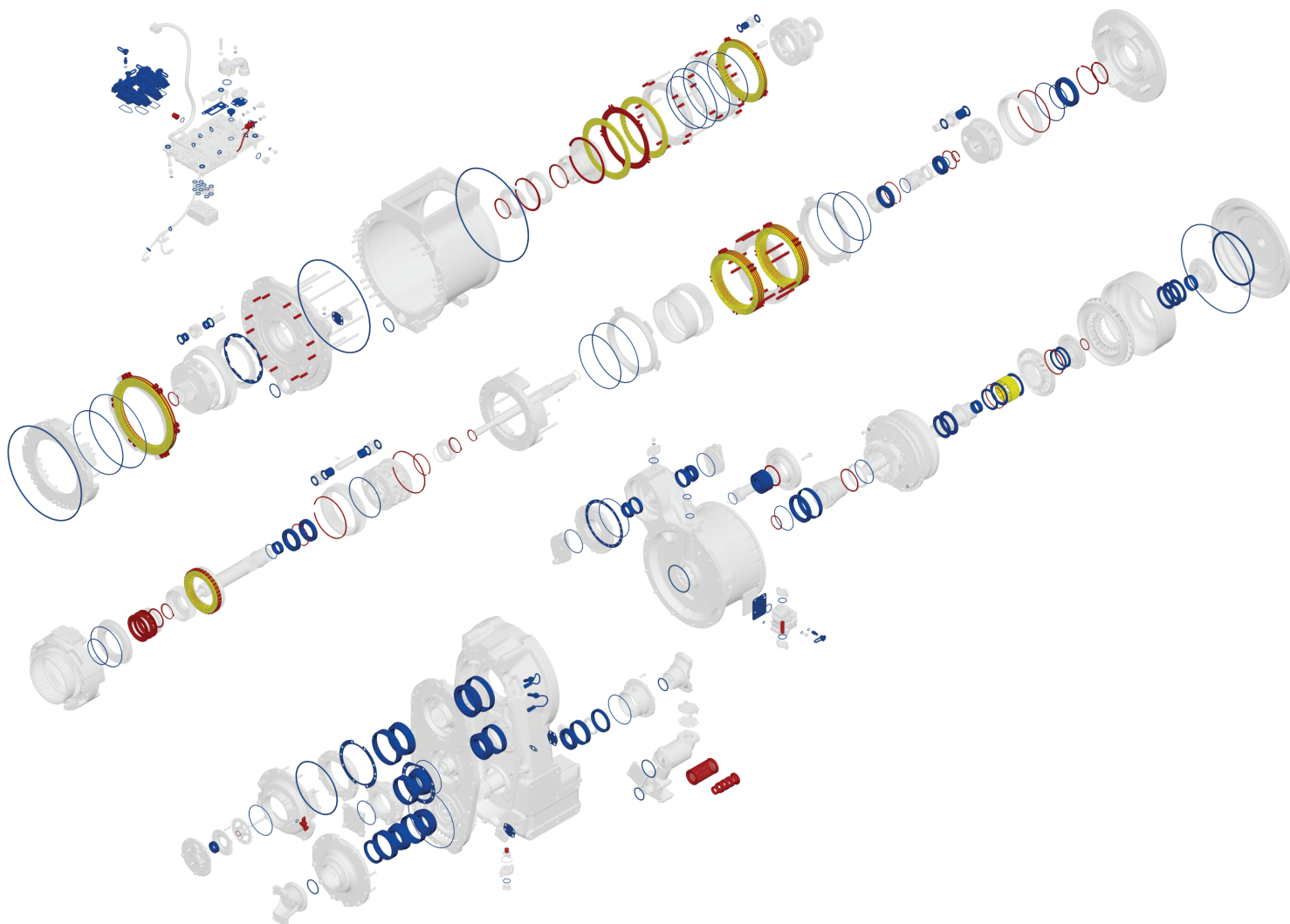
Based on a good running core

New or Reman Head/s and Gaskets	X	X	X
Turbocharger, gaskets and fasteners	X	X	X
New or Reman Fuel Injectors	X	X	X
Air, oil, and fuel filters	X	X	X
Head Bolts(C15)	X	X	X
Fuel Lines (High Pressure)	X	X	X
In Chassis Test After Repair	X	X	X
Engine Gaskets and Bearings		X	X
Cylinder Packs		X	X
Water Pump		X	X
Oil Pump		X	X
Dyno Test Engine		X	X
Engine Control Module (ECM)			X
Wiring Harness/ Eng & Injector			X
Reman or New Engine Oil Cooler			X
Check Clean Radiator & Coolers			X
Engine Mounts			X
Coolant, Air Ind, & Exhaust Hoses			X
HEUI / Fuel Injection Pump			X
TIER IV Components			X
Head Bolts (All C Models)			X
Polish Crankshaft			X
Engineering Updates			X
3 Yr 5000hr Extended Warranty			X
*Level One not an option for truck engines that have over 500k miles			

*Level One not an option for truck engines that have over 500k miles

980G TRANSMISSION OPTIONS

Parts in the drawings may or may not be the same in all arrangements they are only to provide a basic visual interpretation.



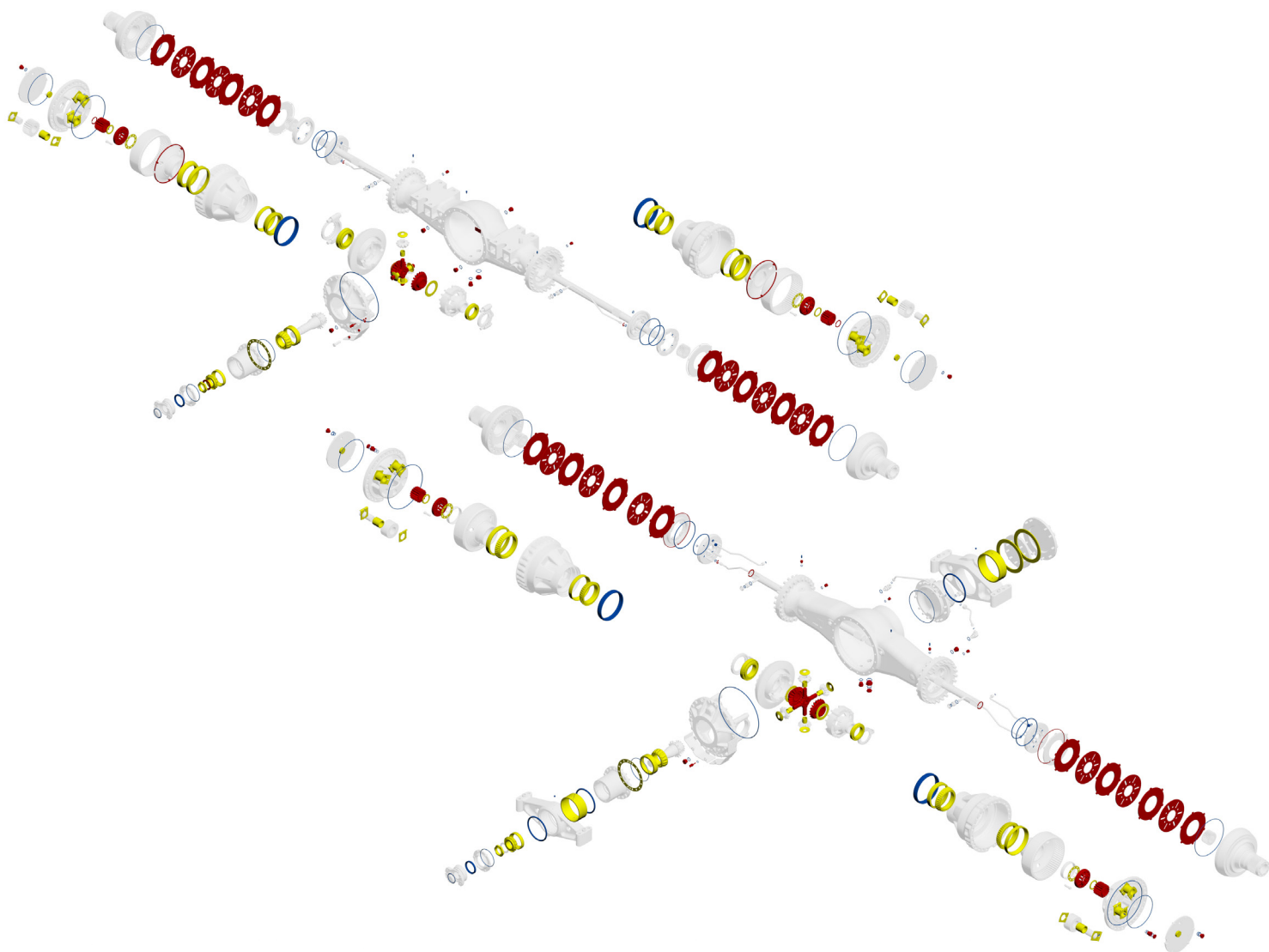
Based on a good running cores before failure
Parts included.

All bearings and races
All seals including control valves
Paint component
Clutch friction discs
Modulation valves
Shim packs
Side thrust plates
Thrust plate retainers
Outlet relief spring
Clutch plates
Magnetic tube
Clutch and valve springs
Clutch and valve springs
Suction screen
Freewheel cam
Sensors/switches
Retaining ring
Thrust disc/plates
Test (transmission

BLUE LEVEL 1	YELLOW LEVEL 2	RED LEVEL 3
X	X	X
X	X	X
X	X	X
	X	X
X	X	X
X	X	X
X	X	X
X	X	X
X	X	X
X	X	X
		X
		X
		X
		X
	X	X
X	X	X
X	X	X
X	X	X
X	X	X
X	X	X

980G AXLE OPTIONS

Parts in the drawings may or may not be the same in all arrangements they are only to provide a basic visual interpretation.



Based on a good running cores before failure
Parts included.

All Seals and Gaskets
All Bearings and Races
Shim Pack
Paint Component
Locknut - pinion shaft
Retaining Rings
Brake Disks and Plates that do not meet Caterpillar Reuse Guidelines
Differential Spider
*A WARRANTABLE LEVEL

BLUE LEVEL 1	YELLOW LEVEL 2	RED LEVEL 3
X	X	X
	X	X
	X	X
X	X	X
		X
	X	X
		X
		X
		X



980G FINANCING OPTIONS

12 MONTHS
EQUAL PAYMENTS

0%
INTEREST*

18 MONTHS
EQUAL PAYMENTS

2.9%
INTEREST*

*With approved credit. Not all buyers may qualify. \$1,000 minimum purchase required with minimum of 50% parts on invoice. Offers, pricing, and options subject to change without notice. See dealer for details.

REBUILDING THE MACHINES THAT BUILT ARKANSAS

Riggs



El Dorado

2001 West Hillsboro St.
870-881-0800

Fort Smith

6601 South Zero
479-646-4755

Harrison

5475 Hwy 65 South
870-429-8700

Jonesboro

3701 East Parker Rd.
870-932-5473

Little Rock

9125 Interstate 30
501-570-3100

Russellville

370 Lakefront Drive
479-968-3304

Springdale

4117 Wagon Wheel Rd.
479-756-8080

Texarkana

2400 Trinity Rd.
870-773-5621

riggscat.com

