

Riggs



980H

REPAIR OPTIONS

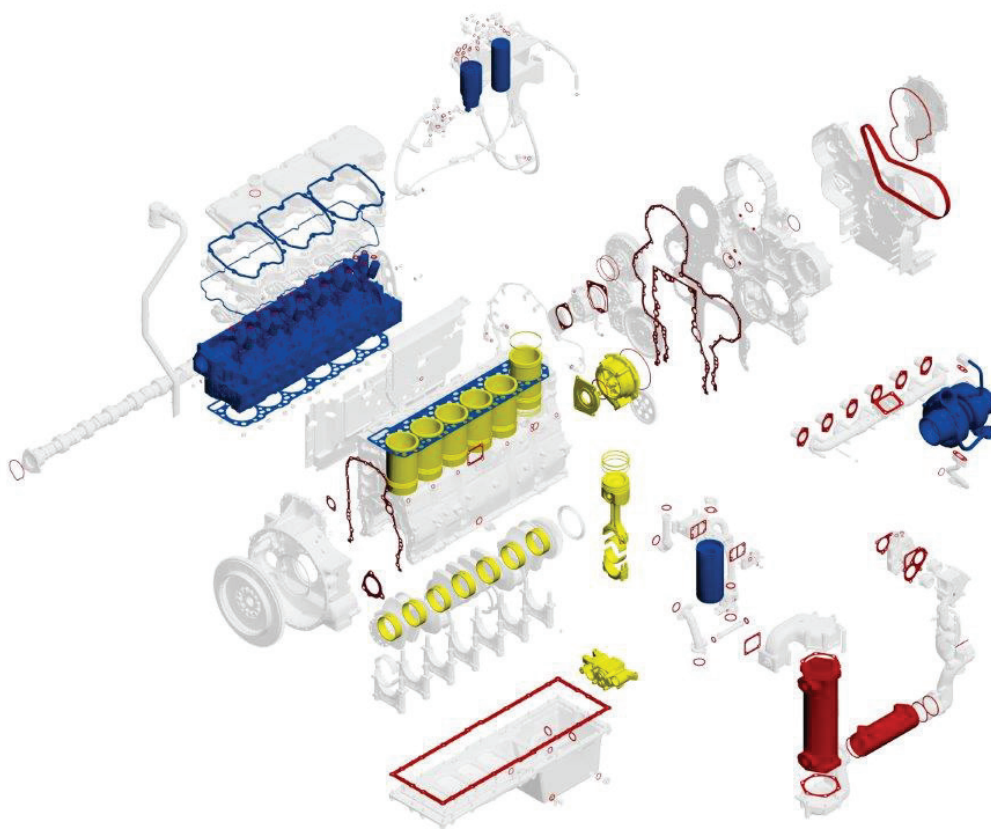
888.906.9228



RIGGSCAT.COM

980H ENGINE OPTIONS

Parts in the drawings may or may not be the same in all arrangements they are only to provide a basic visual interpretation.

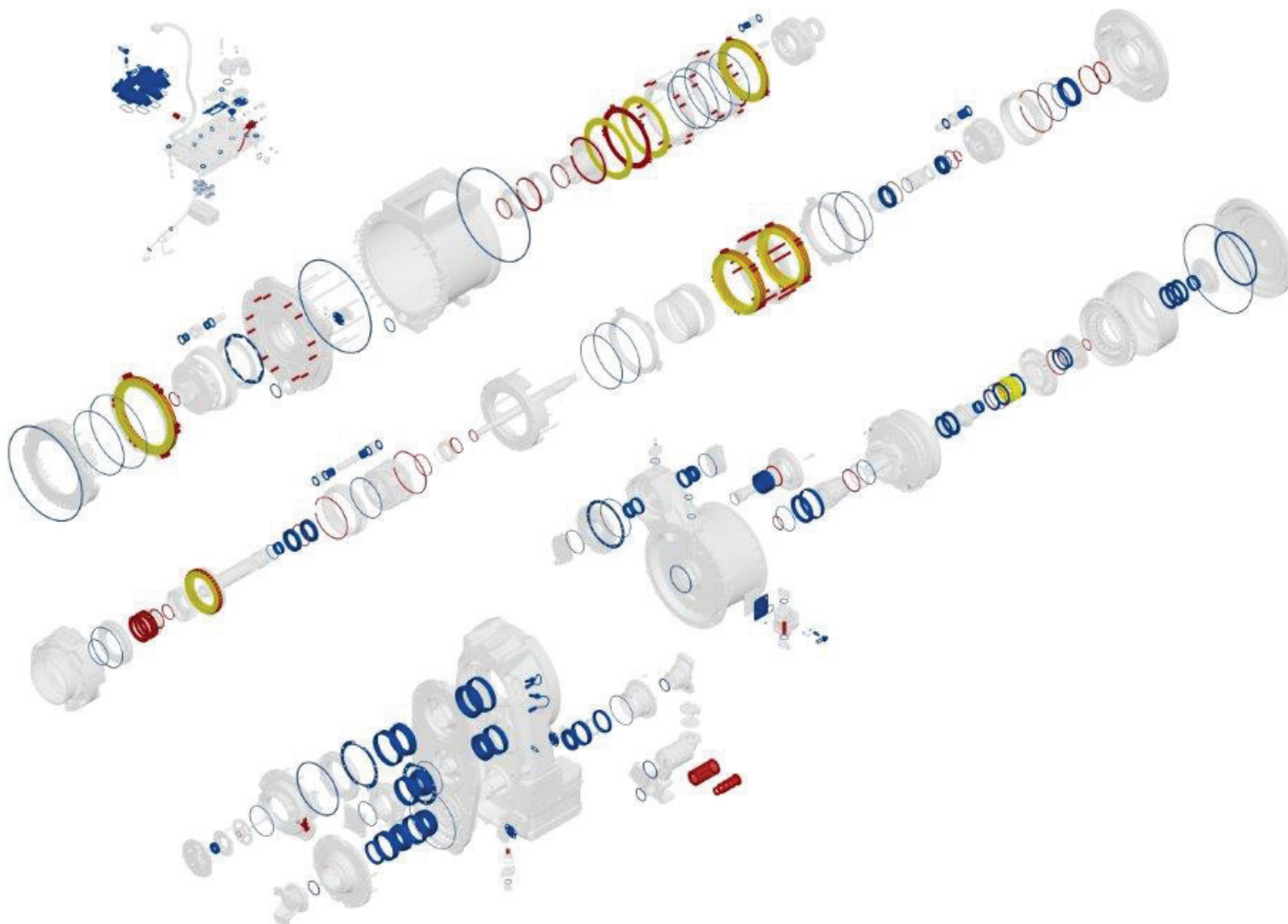


Based on a good running core

<i>Based on a good running core</i>	BLUE LEVEL 1	YELLOW LEVEL 2	RED LEVEL 3
New or Reman Head/s and Gaskets	X	X	X
Turbocharger, gaskets and fasteners	X	X	X
New or Reman Fuel Injectors	X	X	X
Air, oil, and fuel filters	X	X	X
Head Bolts(C15)	X	X	X
Fuel Lines (High Pressure)	X	X	X
In Chassis Test After Repair	X	X	X
Engine Gaskets and Bearings		X	X
Cylinder Packs		X	X
Water Pump		X	X
Oil Pump		X	X
Dyno Test Engine		X	X
Engine Control Module (ECM)			X
Wiring Harness/ Eng & Injector			X
Reman or New Engine Oil Cooler			X
Check Clean Radiator & Coolers			X
Engine Mounts			X
Coolant, Air Ind, & Exhaust Hoses			X
HEUI / Fuel Injection Pump			X
TIER IV Components			X
Head Bolts (All C Models)			X
Polish Crankshaft			X
Engineering Updates			X
3 Yr 5000hr Extended Warranty			X
*Level One not an option for truck engines that have over 500k miles			

980H TRANS. AND TORQ.

Parts in the drawings may or may not be the same in all arrangements they are only to provide a basic visual interpretation.



Based on good running cores

Parts Included

All bearings and races

All seals including control valves

Paint component

Clutch friction discs

Modulation valves

Shim packs

Side thrust plates

Thrust plate retainers

Outlet relief spring

Clutch plates

Magnetic tube

Clutch and valve springs

Suction screen

Freewheel cam

Sensors/switches

Retaining ring

Thrust disc/plates

Test (transmission)

BLUE LEVEL 1

X

X

X

X

X

X

X

X

X

X

X

X

X

X

X

X

X

X

YELLOW LEVEL 2

X

X

X

X

X

X

X

X

X

X

X

X

X

X

X

X

X

X

RED LEVEL 3

X

X

X

X

X

X

X

X

X

X

X

X

X

X

X

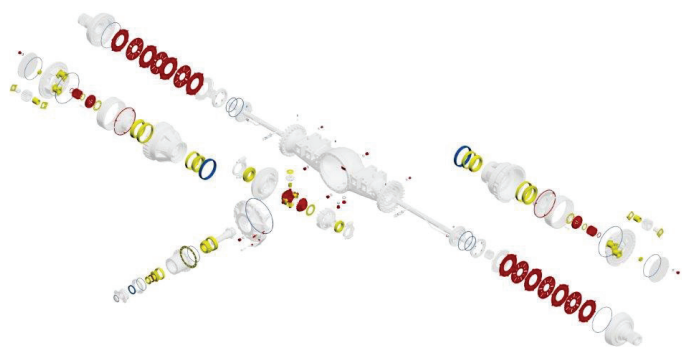
X

X

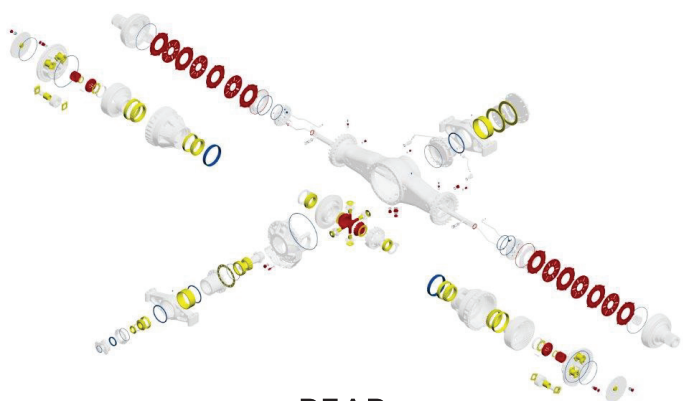
X

980H FRONT AND REAR AXLE

Parts in the drawings may or may not be the same in all arrangements they are only to provide a basic visual interpretation.



FRONT



REAR

Based on good running cores

	BLUE LEVEL 1	YELLOW LEVEL 2	RED LEVEL 3
All Seals and Gaskets	X	X	X
All Bearings and Races		X	X
Shim Pack		X	X
Paint Component	X	X	X
Locknut - pinion shaft			X
Retaining Rings		X	X
Brake Disks and Plates that do not meet Caterpillar Reuse Guidelines			X
Differential Spider			X
*A WARRANTABLE LEVEL			

980H HYDRAULIC CYLINDERS

Parts in the drawings may or may not be the same in all arrangements they are only to provide a basic visual interpretation.



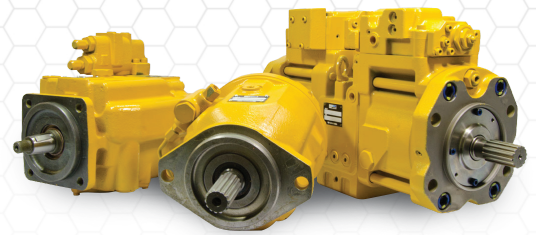
Based on good running cores

	BLUE LEVEL 1	RED LEVEL 2
Wash Cylinder	X	X
Disassemble	X	X
Inspect	X	X
Perform Light Hone as Necessary	X	X
Clean Out	X	X
Reassemble With New Seals	X	X
Replace Eye and or Trunnion Bearings		X
Pressure and Operational Test	X	X

CPT - Cat® Certified Power Train Program

Cat Certified Power Train Rebuild with Genuine Cat Parts and Skilled Riggs Cat Technicians.

- Maximum Productivity
- Cost-Effective
- Improved Reliability and Availability
- Greater Return on Your Equipment Investment
- Financing Through Cat Finance



The Cat Certified Power Train restores your machine's power train to like-new performance. This service covers the radiator, engine, transmission, torque converter, final drive and axle. Approximately 200 tests and inspections of the power train components are performed. Replacement or reconditioning of approximately 3,000 parts - including power train electrical switches, sensors, sending units, electronic control modules, engine wiring harnesses, bearings, gaskets, seals and coolant hoses. Critical engineering improvements and updates are incorporated and extended power train coverage is available.

The Certified Power Train Program Includes:

Basic Engine:

- Fuel, Oil and Water Pump
- Turbocharger
- Governor
- Engine Control Module, Etc.

Torque Converter

Drive Line:

- Drive Shafts and U-Joints

Differential

Transfer Gear Group

Transmission:

- Transmission Pumps
- Hydraulic Controls

Drive Axles

Final Drives

Electronics:

- Controls and Sensors that function to direct power to move the machine

Radiators and Coolers

Paint Machine

980H FINANCING OPTIONS FROM 0% - 4.9% AND 12-36 MONTHS TERMS*

*With approved credit. Not all buyers may qualify. \$1,000 minimum purchase required with minimum of 50% parts on invoice. Offers, pricing, and options subject to change without notice. See dealer for details.

REBUILDING THE MACHINES THAT BUILT ARKANSAS

Riggs



El Dorado

2001 West Hillsboro St.
870-881-0800

Fort Smith

6601 South Zero
479-646-4755

Harrison

5475 Hwy 65 South
870-429-8700

Jonesboro

3701 East Parker Rd.
870-932-5473

Little Rock

9125 Interstate 30
501-570-3100

Russellville

370 Lakefront Drive
479-968-3304

Springdale

4117 Wagon Wheel Rd.
479-756-8080

Texarkana

2400 Trinity Blvd.
870-773-5621

RIGGSCAT.COM

